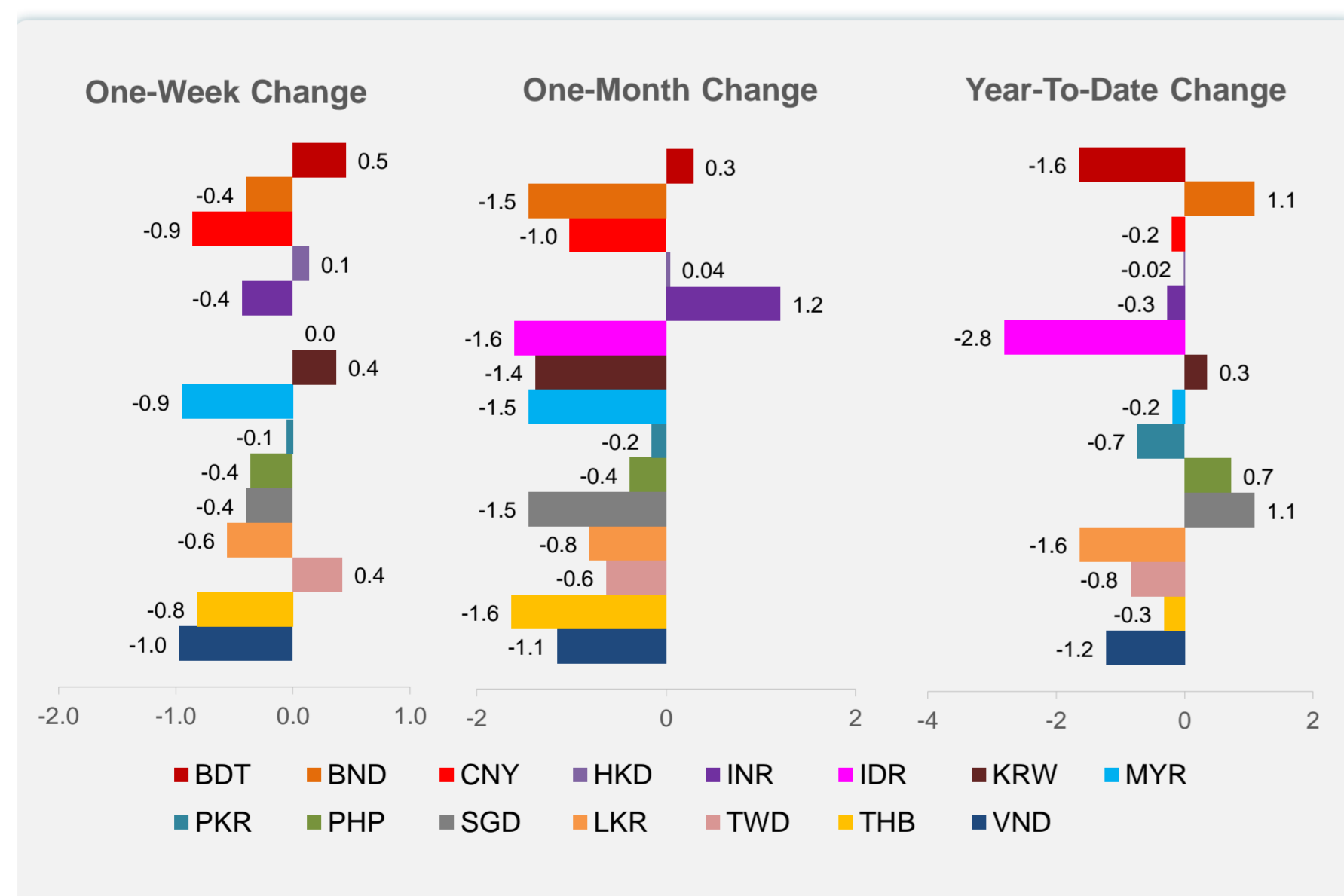
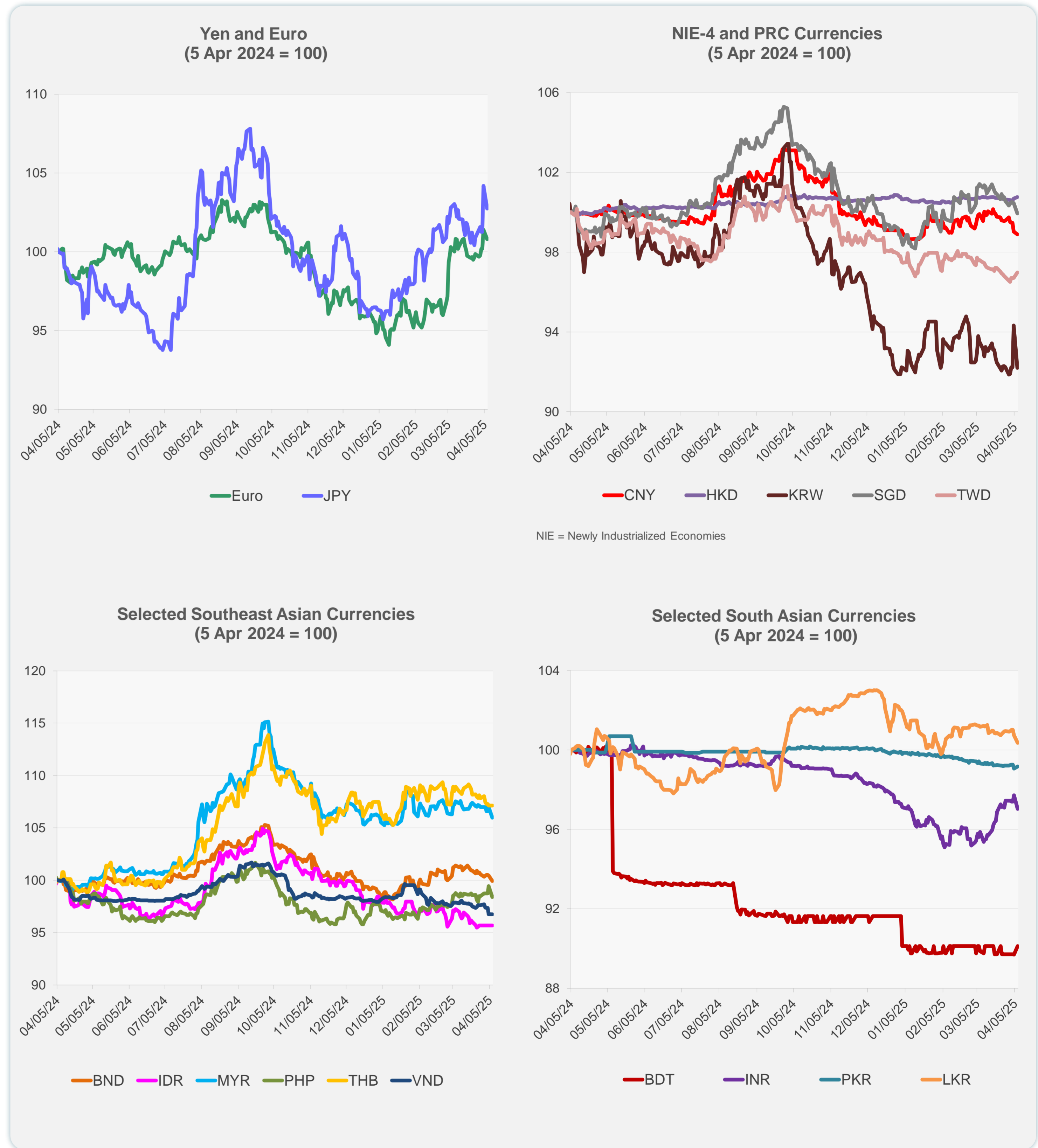


	Latest Closing	% change from Previous Day	% change from 01-Jan-25
Euro	0.92	-0.60	5.48
Japanese yen (JPY)	147.57	-1.38	6.50
Bangladeshi taka (BDT)	121.50	0.47	-1.65
Brunei dollar (BND)	1.35	-0.52	1.09
Chinese yuan (CNY)	7.31	-0.14	-0.20
Hong Kong dollar (HKD)	7.77	0.07	-0.02
Indian rupee (INR)	85.84	-0.70	-0.27
Indonesian rupiah (IDR)	16,560.00	0.00	-2.81
Korean won (KRW)	1,467.05	-2.25	0.35
Malaysian ringgit (MYR)	4.48	-0.96	-0.19
Pakistan rupee (PKR)	280.43	0.11	-0.73
Philippine peso (PHP)	57.43	-1.04	0.72
Singapore dollar (SGD)	1.35	-0.52	1.09
Sri Lanka rupee (LKR)	297.87	-0.39	-1.63
Taipei,China NT dollar (TWD)	33.06	0.29	-0.84
Thai baht (THB)	34.21	0.00	-0.32
Vietnamese dong (VND)	25,800.00	0.00	-1.22



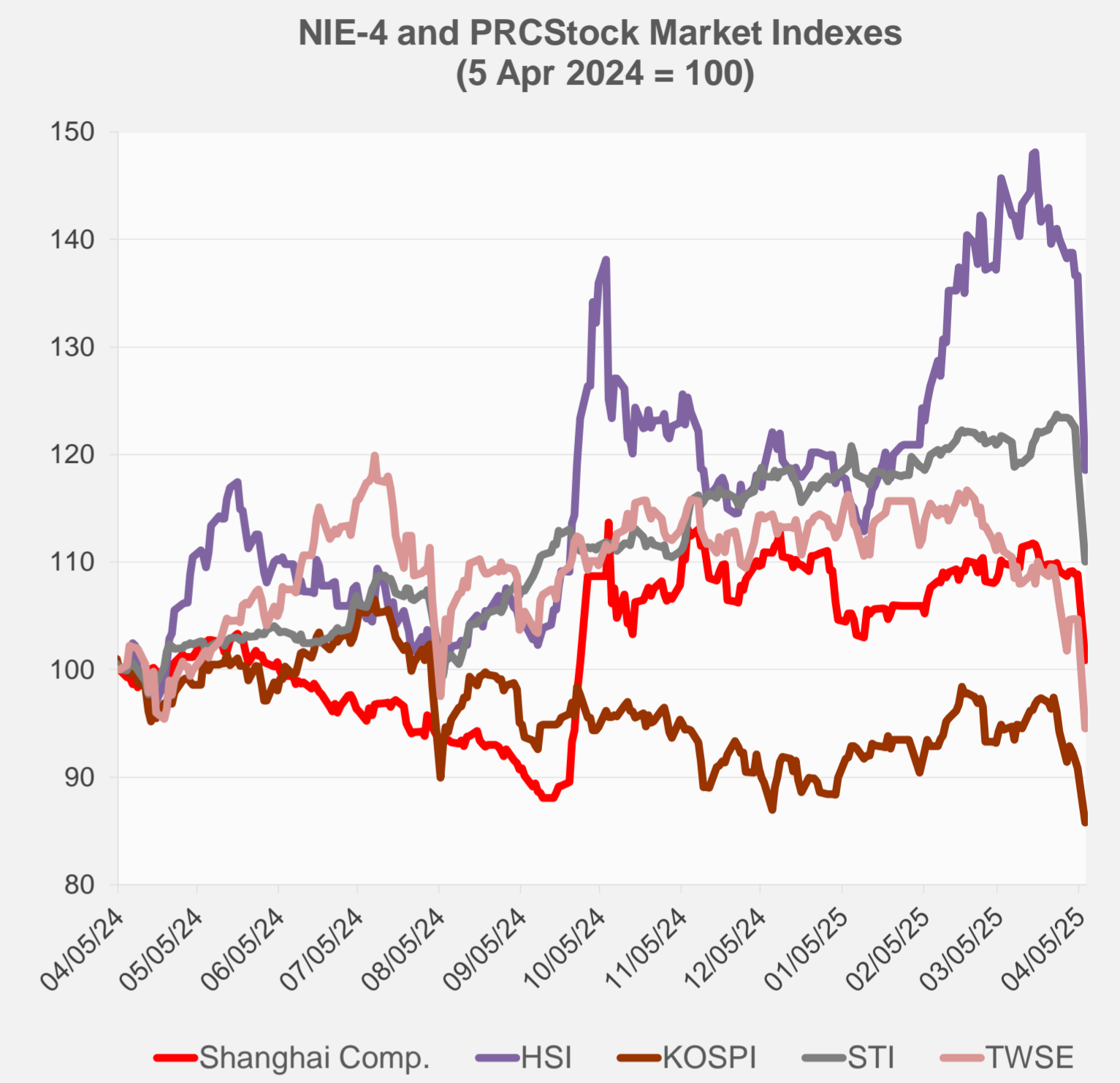
Note: Negative/Decreasing values indicate depreciation of local currency, and positive/increasing values indicate appreciation.
Source: ADB calculations using data from Haver Analytics.



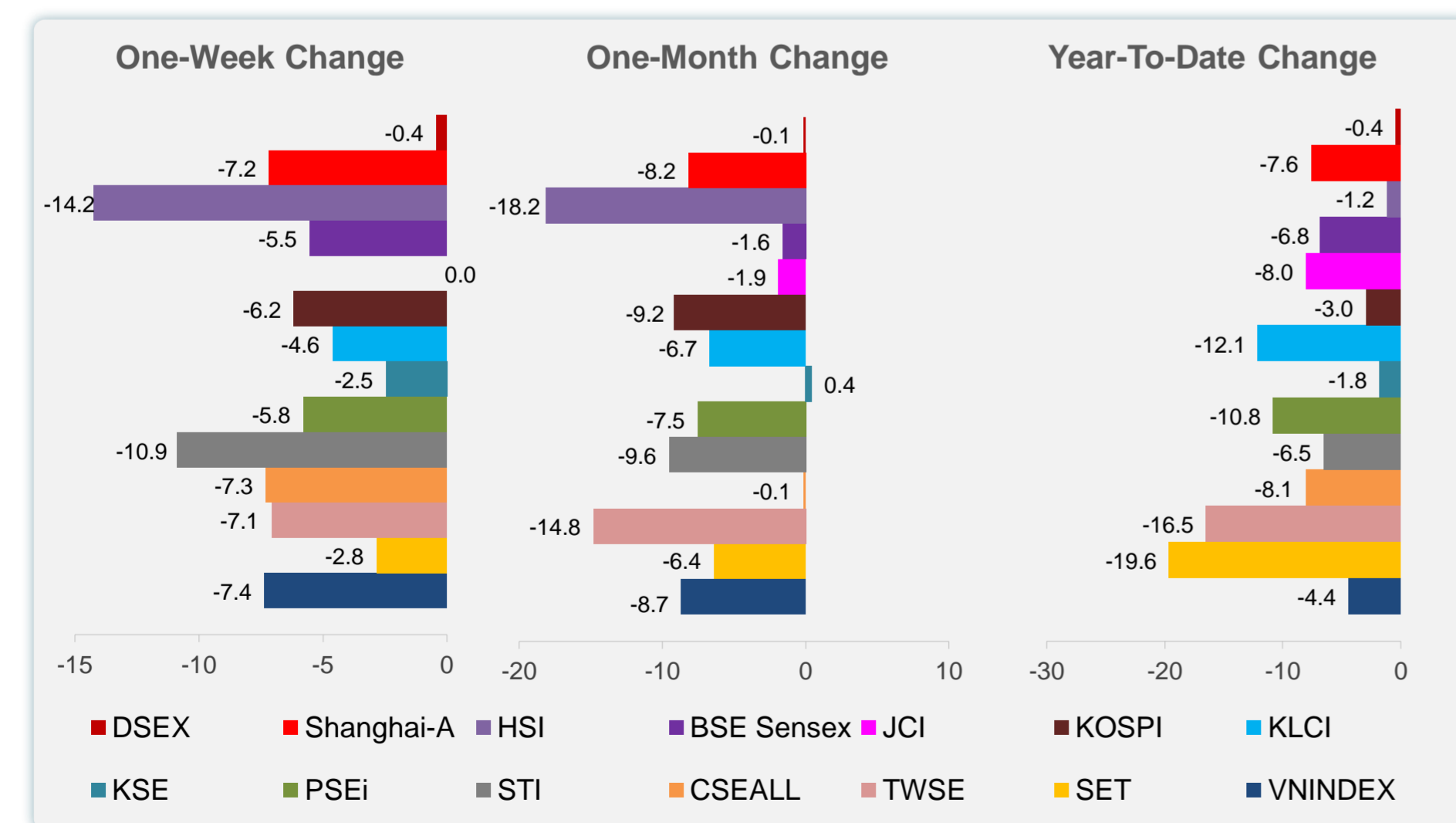
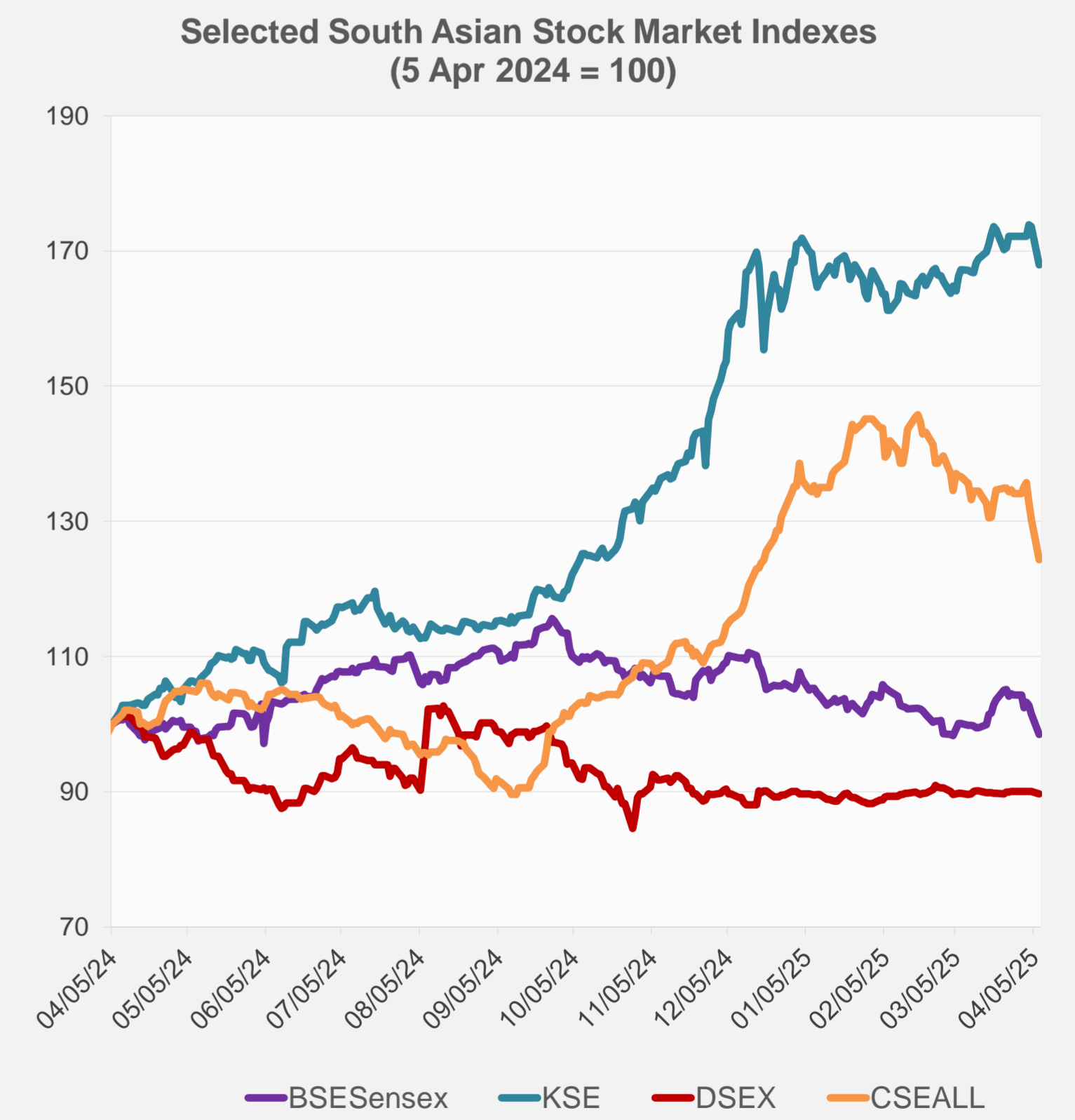
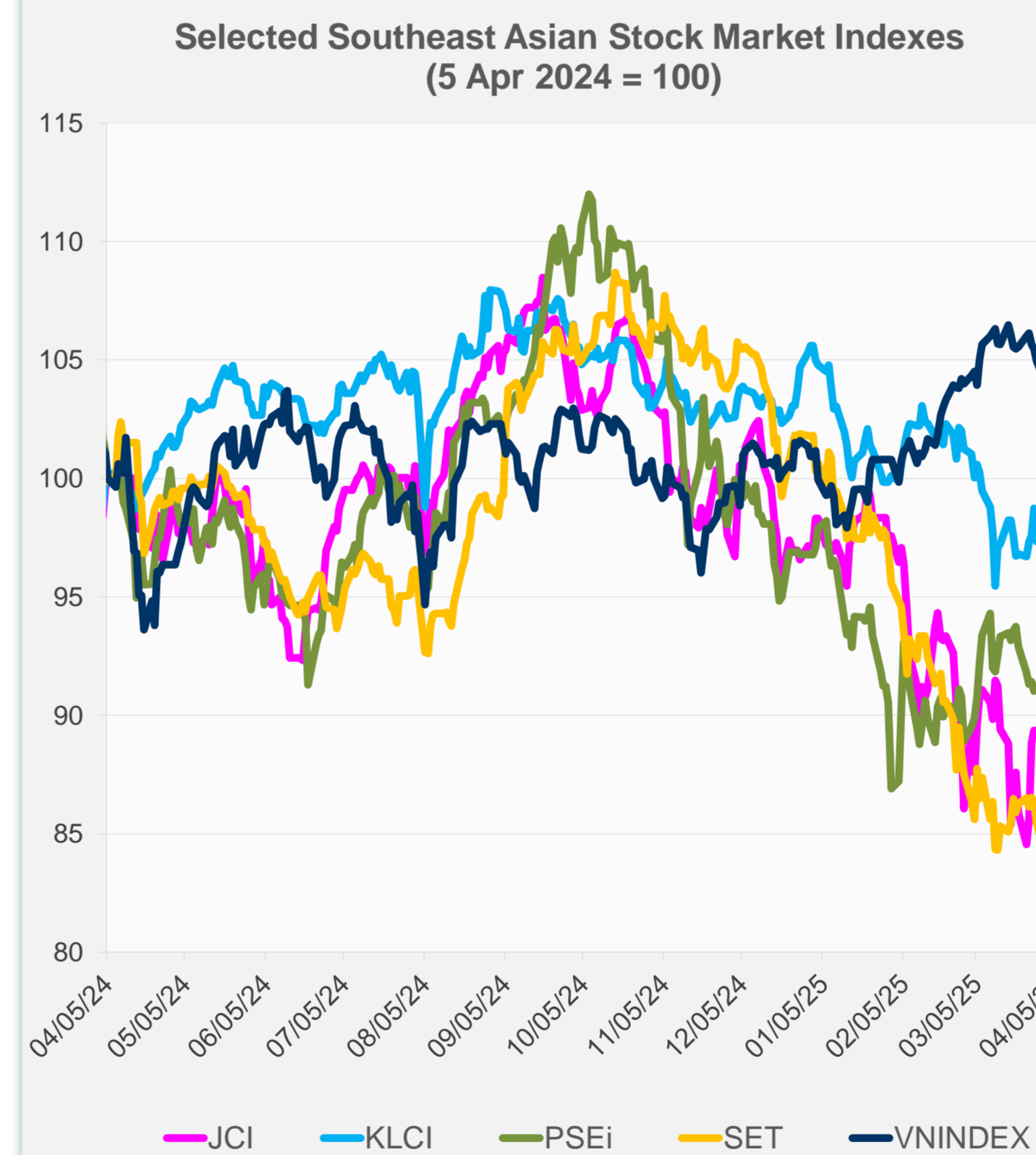
Source: Haver Analytics.

Daily Market Watch
STOCK INDEXES

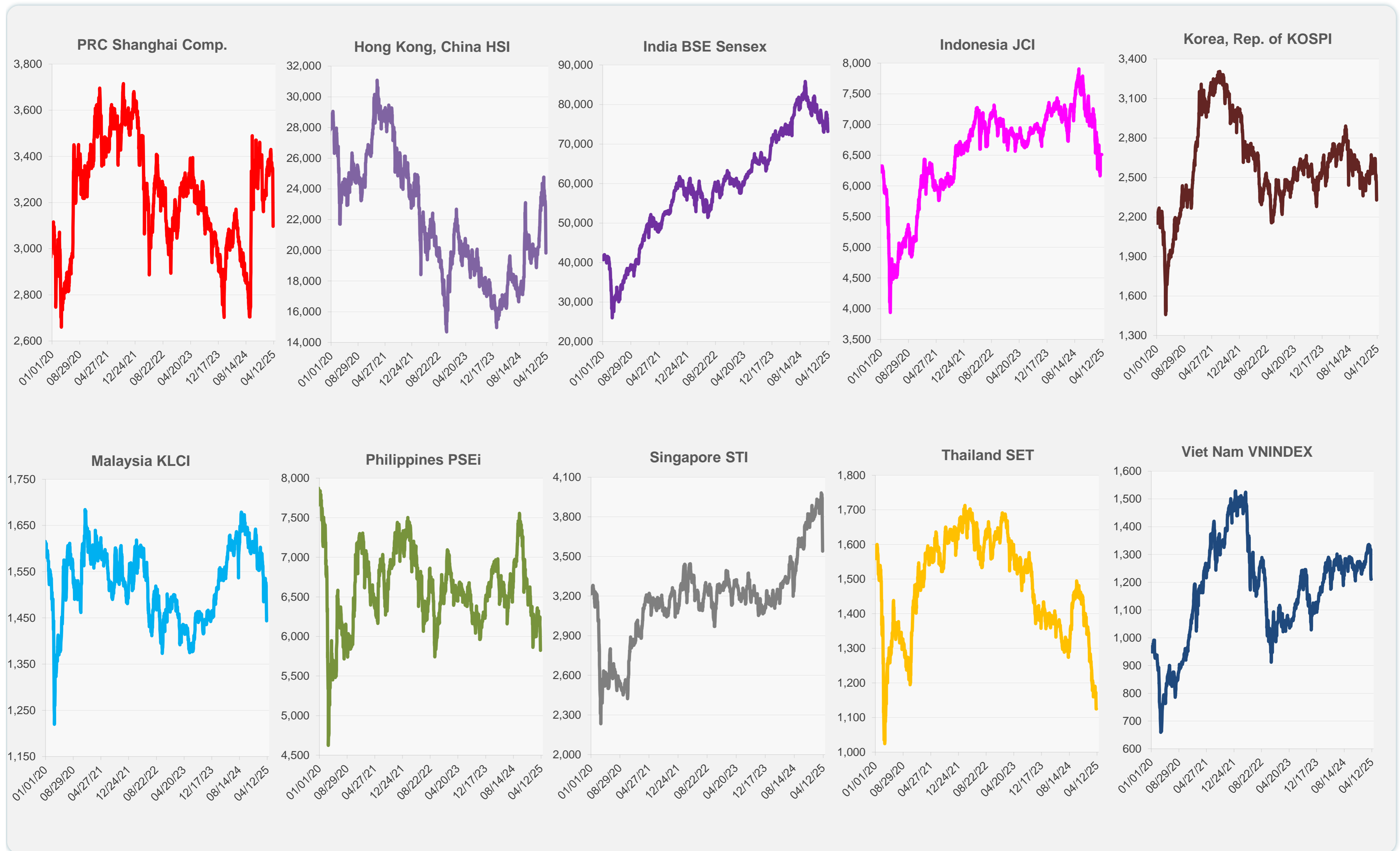
	Latest Closing	% change from Previous Day	% change from 01-Jan-25
US Dow Jones Ind Avg	37,965.60	-0.91	-10.76
US NASDAQ	15,603.26	0.10	-19.20
US S&P 500	5,062.25	-0.23	-13.93
UK FTSE 100	7,702.08	-4.38	-5.76
EURO STOXX 50	4,656.41	-4.55	-4.89
Japan NIKKEI 225	31,136.58	-7.83	-21.95
Bangladesh DSEX	5,196.70	-0.43	-0.41
PRC Shanghai Comp.	3,096.58	-7.34	-7.61
Hong Kong, China HSI	19,828.30	-13.22	-1.15
India BSE Sensex	73,137.90	-2.95	-6.84
Indonesia JCI	6,510.62	0.00	-8.04
Korea, Rep. of KOSPI	2,328.20	-5.57	-2.97
Malaysia KLCI	1,443.80	-4.01	-12.09
Pakistan KSE 100	114,909.48	-3.27	-1.79
Philippines PSEi	5,822.85	-4.30	-10.81
Singapore STI	3,540.50	-7.46	-6.52
Sri Lanka CSEALL	14,660.45	-4.64	-8.05
Taipei, China TWSE	19,232.35	-9.70	-16.51
Thailand SET	1,125.21	0.00	-19.64
Viet Nam VNINDEX	1,210.67	0.00	-4.43



NIE = Newly Industrialized Economies



Sources: ADB calculations using data from CEIC Data Company and Haver Analytics.



Sources: CEIC Data Company and Haver Analytics.

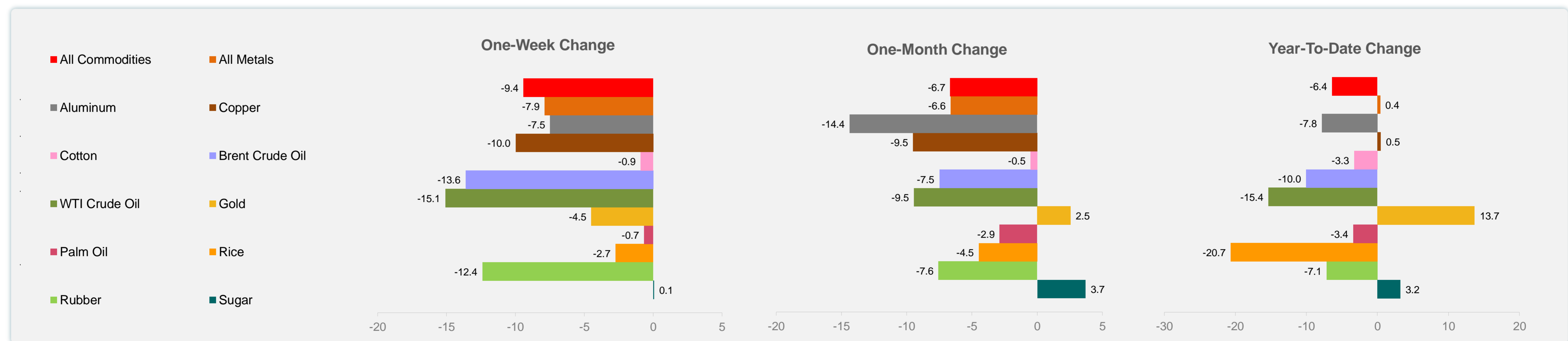
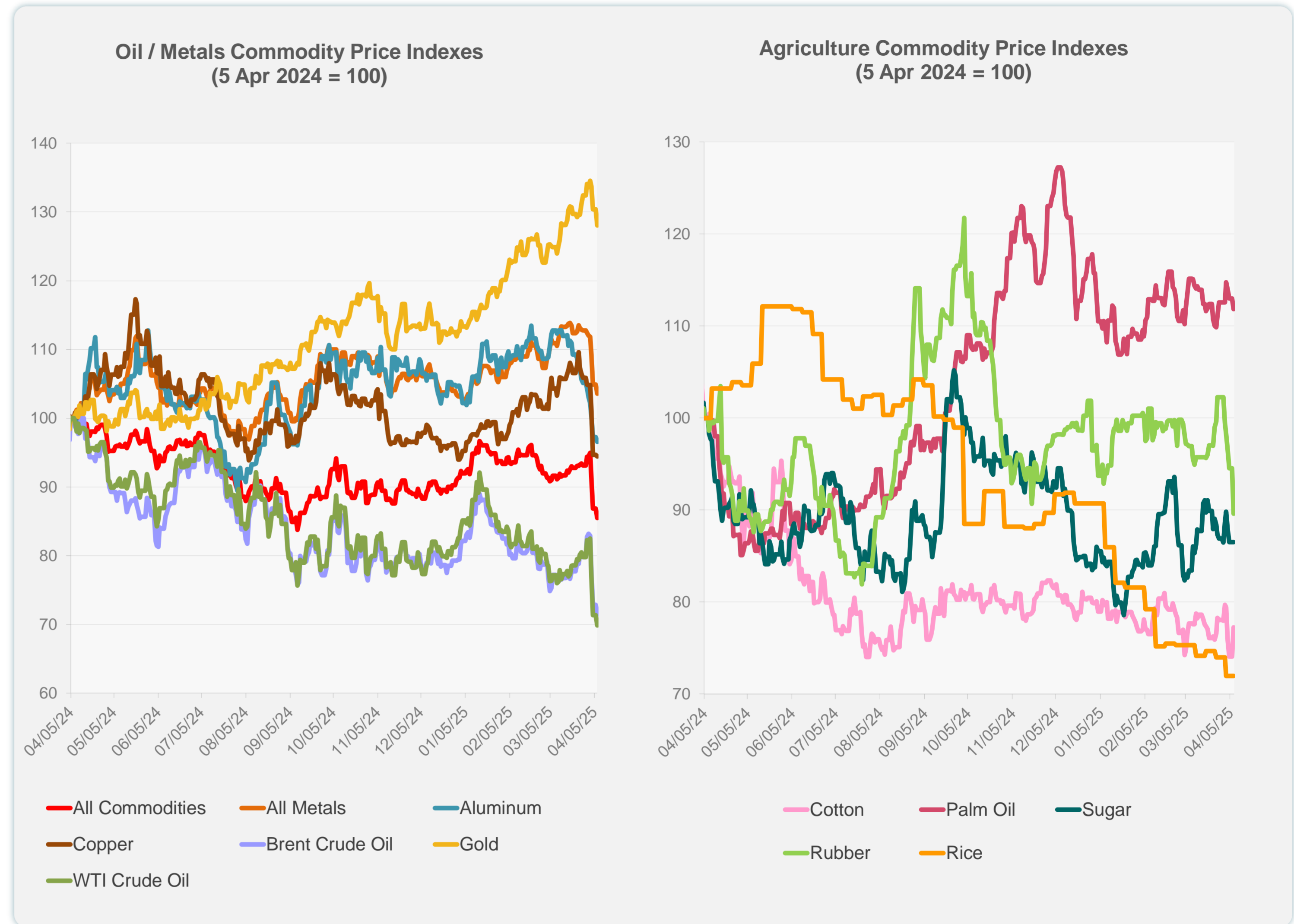
Daily Market Watch
COMMODITY PRICES

8 April 2025, 9:00 AM Manila

	Unit	Latest Closing	% change from Previous Day	% change from 01-Jan-25
S&P All Commodities	US\$	514.57	-1.55	-6.38
S&P All Metals	US\$	308.57	-1.26	0.39
Aluminum	US\$/metric ton	2,329.44	-0.71	-7.81
Copper	US\$/metric ton	8,693.73	-0.27	0.47
Cotton	US cents/lb	63.74	4.30	-3.28
Brent Crude Oil	US\$/barrel	66.66	-1.88	-10.05
WTI Crude Oil	US\$/barrel	60.70	-2.08	-15.37
Gold	US\$/troy oz	2,983.28	-1.81	13.67
Palm Oil	US\$/metric tonne	1,062.67	-1.04	-3.40
Rice ¹	US\$/metric ton	426.00	0.00	-20.67
Rubber ²	US\$/kg	219.90	-5.22	-7.14
Sugar	US cents/lb	18.79	0.00	3.24

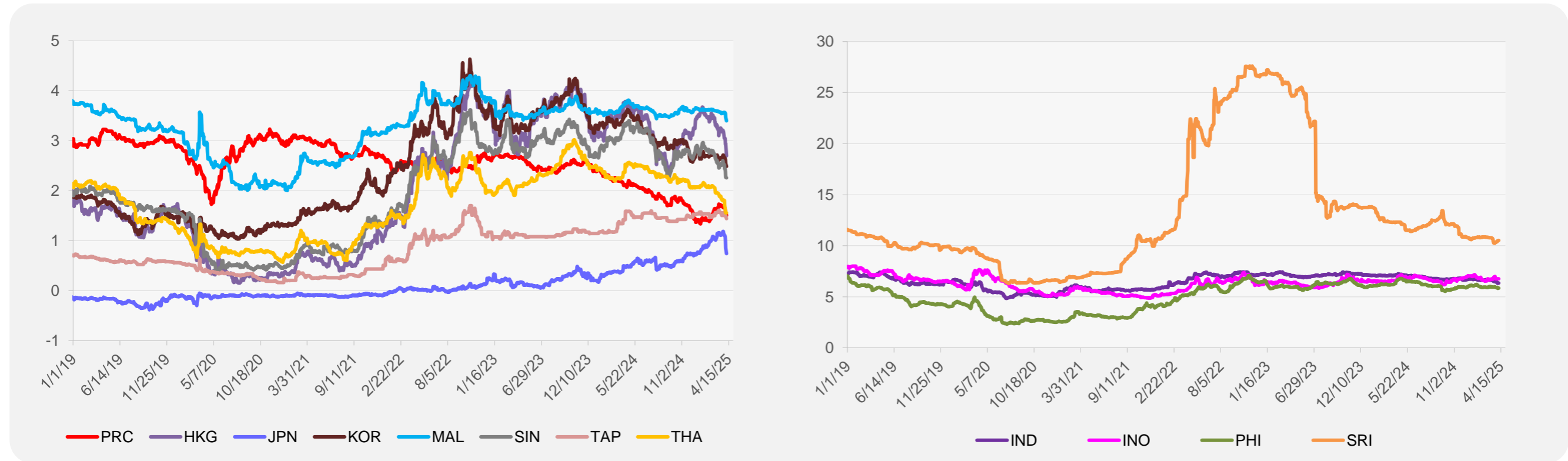
¹ Latest closing price from 2 April 2025.

² Singapore Exchange, Ribbed Smoked Sheet Rubber.

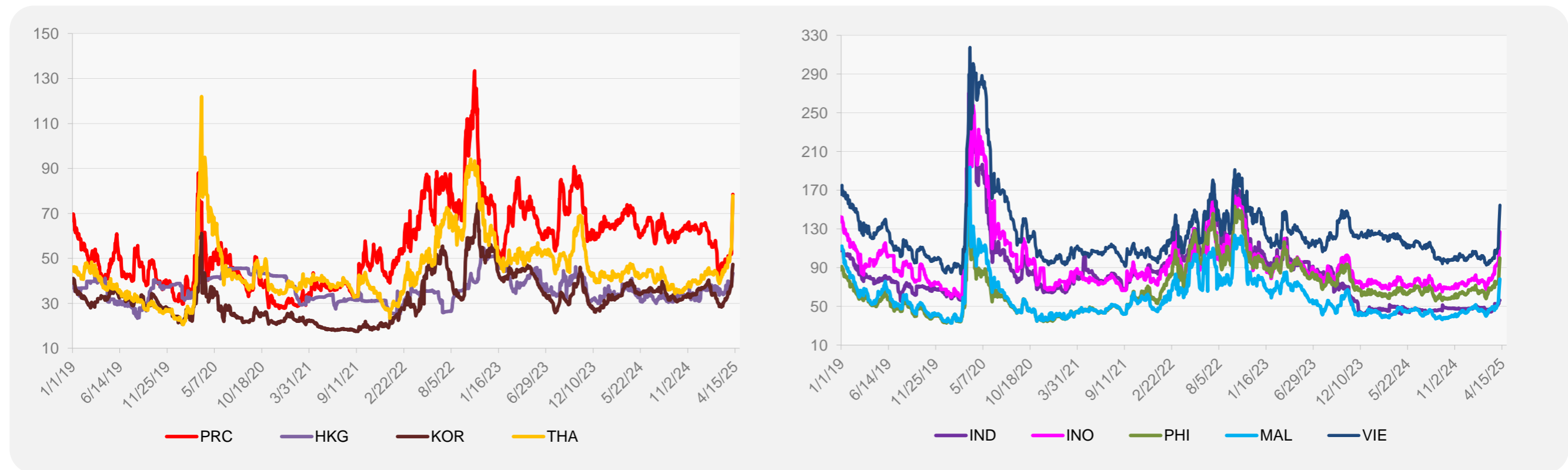


Source: ADB calculations using data from Bloomberg.

5-YEAR LOCAL CURRENCY GOVERNMENT BOND YIELDS (%)



5-YEAR CREDIT DEFAULT SWAP¹



¹ In USD and based on sovereign bonds.
Source: ADB calculations using data from Bloomberg.